



# Spulenliste

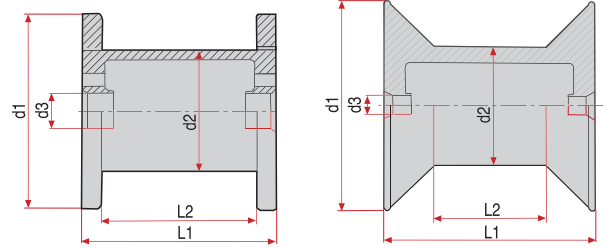
## DER SPEZIALIST

Grob-, Fein- und Feinstdrähte  
Profildrähte

J. G. Dahmen & Co. GmbH & Co. KG  
Karl-Arnold-Straße 45–73  
58644 Iserlohn  
Germany  
Tel. +49 2371 9580–0  
Fax +49 2371 9580–58  
[www.dahmen-draht.de](http://www.dahmen-draht.de)  
[verkauf@dahmen-draht.de](mailto:verkauf@dahmen-draht.de)

# Spulenliste

d1 = Flanschdurchmesser  
d2 = Kerndurchmesser  
d3 = Bohrung  
L1 = Gesamtbreite  
L2 = Spulbreite



## Normspulen nach DIN 60264-2-1

No.	d1	d2	d3	L1	L2	Fassungsvermögen ca. kg
63	63,0	40,0	11,0	63,0	49,0	0,30
80	80,0	50,0	16,0	80,0	64,0	1,00
100	100,0	63,0	16,0	100,0	80,0	2,00
125	125,0	80,0	16,0	125,0	100,0	3,00
160	160,0	100,0	22,0	160,0	128,0	7,50
200	200,0	125,0	22,0	200,0	160,0	15,00
250	250,0	160,0	22,0	200,0	160,0	22,00
355	355,0	224,0	36,0	200,0	160,0	40,00
500	500,0	315,0	36,0	250,0	180,0	75,00
500	500,0	315,0	127,0	350,0	280,0	150,00

## Bikonische Spulen nach DIN EN 60264-5-1

HKK 76/45	63,0	43,5	16,0	60,0	34,0	0,40
HK 76/45	63,5	44,0	8,0	86,0	60,0	0,60
HK 76/45	63,5	44,0	16,0	86,0	60,0	0,60
HK 80/45/8	80,0	55,0	8,0	100,0	70,0	0,80
HK 80/45/11	80,0	55,0	11,0	100,0	70,0	0,80
HK 80/45/16	80,0	55,0	16,0	100,0	70,0	0,80
HKV 100/45	100,0	56,0	16,0	100,0	49,0	1,20
HK 100/59-160	100,0	75,0	59,0	160,0	91,0	2,00
HKV 125/45	125,0	71,0	16,0	125,0	65,0	3,00
HK 130/81-176	130,0	99,0	81,7	176,0	91,0	3,00
HKV 160/45	160,0	90,0	22,0	160,0	85,0	7,50

## Sonderspulen

MF 40	40,0	25,0	8,0	90,0	70,0	0,20
MF 50	50,0	31,5	8,0	90,0	70,0	0,30
F 221	74,0	62,0	11,0	79,0	93,0	0,30
F 225	80,0	58,0	11,0	100,0	84,4	0,80
HK 76	63,4	44,0	16,0	86,3	76,0	0,45
S 100	100,0	80,0	64,5	150,0	135,0	1,80
P 3	130,0	80,0	20,0	110,0	90,0	3,60
P 5	160,0	90,0	20,0	114,0	90,0	5,50
P 10	200,0	90,0	25,0	134,0	110,0	10,00
P 15	249,0	110,0	30,0	140,0	110,0	17,00
B 10/17 glatt	165,0	95,0	17,0	103,0	88,0	5,60
B 10/17 vertieft	165,0	95,0	17,0	103,0	88,0	5,60
B 10/47	165,0	95,0	47,0	103,0	88,0	5,60
250/400 (PT 45)	250,0	200,0	100,0	400,0	335,0	45,00
315/500 (PT 90)	315,0	200,0	100,0	500,0	425,0	90,00